

# Small Stock Holder

For use with small stock on router tables

Version 1.0

## Safety First



Disconnect tool from power source before fitting or removing insert.



Always wear proper ear protection when working with machinery.



Use caution when handling sharp objects (saw blades, router bits, drill bits and so on). Use protective gloves whenever possible.

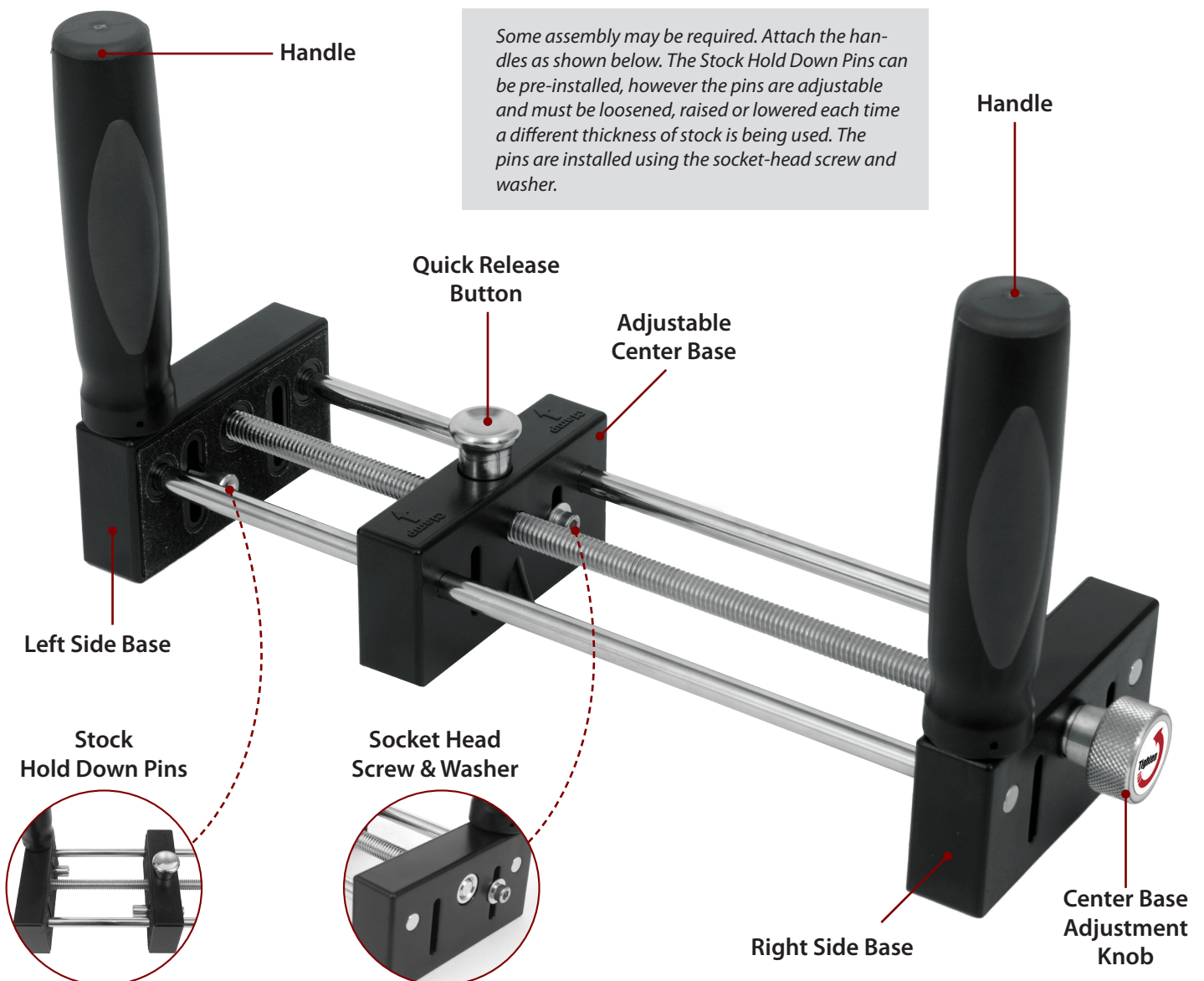


Always wear proper eye protection when working with machinery and tools.

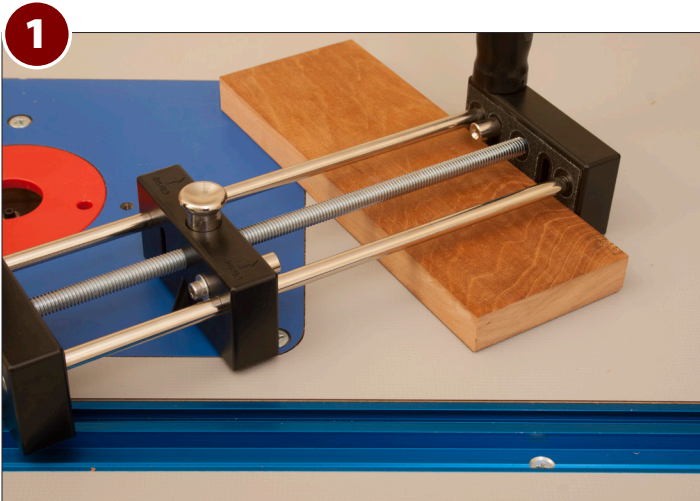


Always wear proper respiratory protection when working near airborne dust particles.

*Please read and fully understand any and all safety materials that came with your power tools or machinery before operation. Always follow all safety guidelines set in place by the power tool or machine manufacturer.*



## How to setup and use the Small Stock Holder



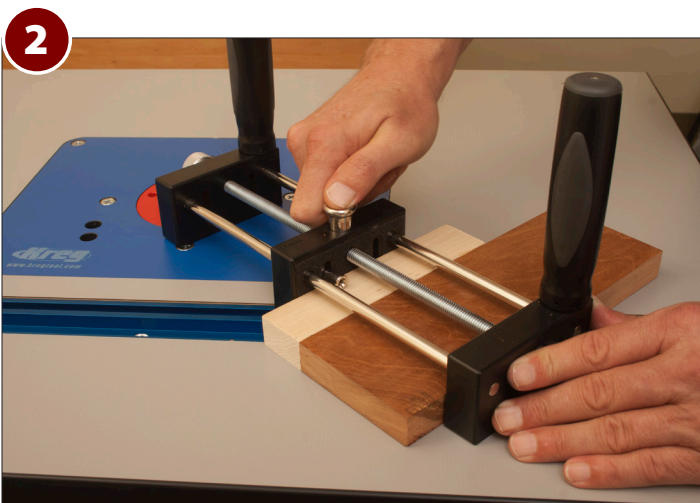
**1**

*Please Note:*  
The Small Stock Holder is specifically designed for use on a router table with fence or a router bit that has a bearing guide.

*Any other type of use of the Small Stock Holder is NOT recommended.*

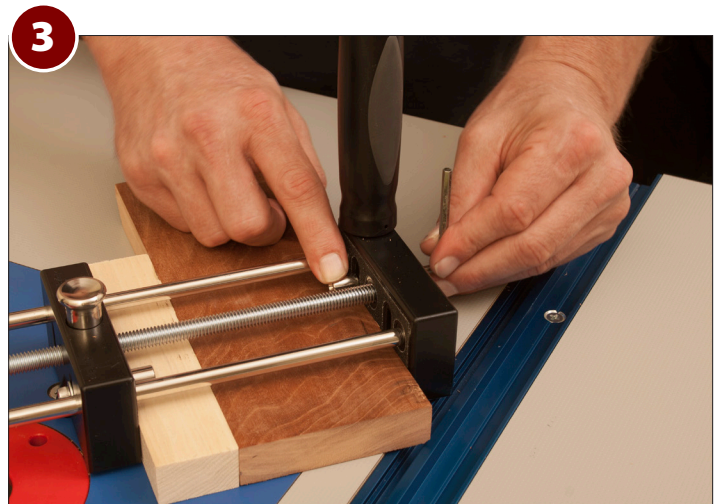
Raise Hold Down Pins to the top of the slots on the Adjustable Center base and Left Side Base. With your Small Stock Holder on a flat surface (router table top or workbench), place the stock piece you are working on between the Left Side Base and the Adjustable Center Base. Slide the working stock piece up against the Left Side Base with the end of the stock you are working extended out in front of the Small Stock Holder far enough so that the router bit will NOT contact the Small Stock Holder. The distance for extending out past the Small Stock Holder should be at least half the diameter of the router bit you are using.

*Please Note:*  
When crosscutting stock you may experience tear-out. To address this, it is recommended to place a sacrificial block between your stock piece and the Adjustable Center Base. You may also attach the sacrificial piece to the Adjustable Center Base through the slots using panhead screws (not included) if so desired.



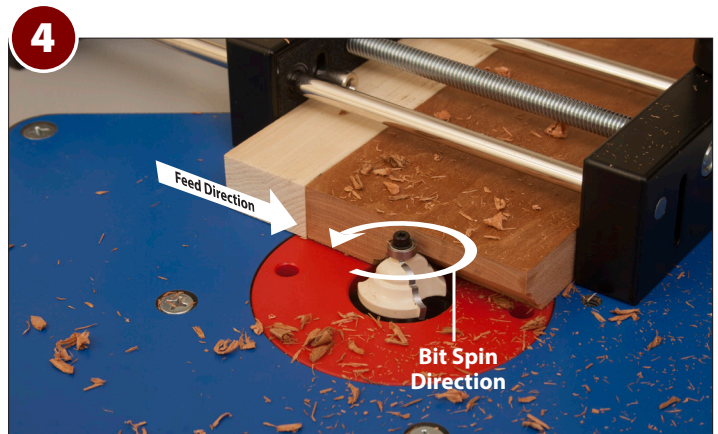
**2**

Press the Quick Release Button and slide the Adjustable Center Base over and against your stock piece while making sure that your stock piece is laying flat on your table top surface. Release the Quick Release Button. In this example we are using a sacrificial block to prevent tear-out.



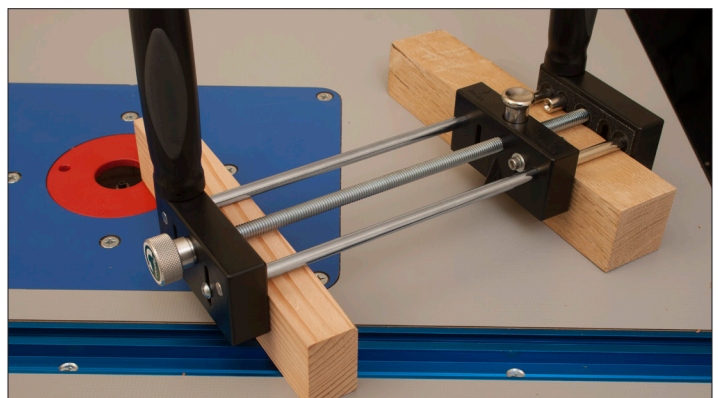
**3**

Using the Hex Key Wrench, loosen the Stock Hold Down Pins and slide them down until they are firmly against your stock piece. Secure each Stock Hold Down Pin with the hex key wrench. Next, using the Center Base Adjustment Knob, secure the stock piece by rotating the knob until the stock piece is firmly in place. Double check to be sure that your stock piece is still flat against your table top and is properly secured before proceeding to the next step.



**4**

With your router bit set to the proper height, turn your router on. Grip the Small Stock Holder Handles and feed the stock into the router in the direction opposite of the router bits rotation. While feed your stock, be sure to keep the stock piece flat on the table and in contact with the router bit bearing guide



There will more than likely be times where you need to rout stock that is thicker than the Small Stock Holder. We recommend following these setup instructions. Create an "outrigger" by cutting a piece of stock that is the same thickness as your working stock piece. Attach the "outrigger" Stock piece to the Right Side Base of the Small Stock Holder through the slots using panhead screws (not included). Doing this will keep your Small Stock Holder and stock piece stable while routing.